



# FABRICACIONES Y MONTAJES INDUSTRIALES JRO

Project development ✓

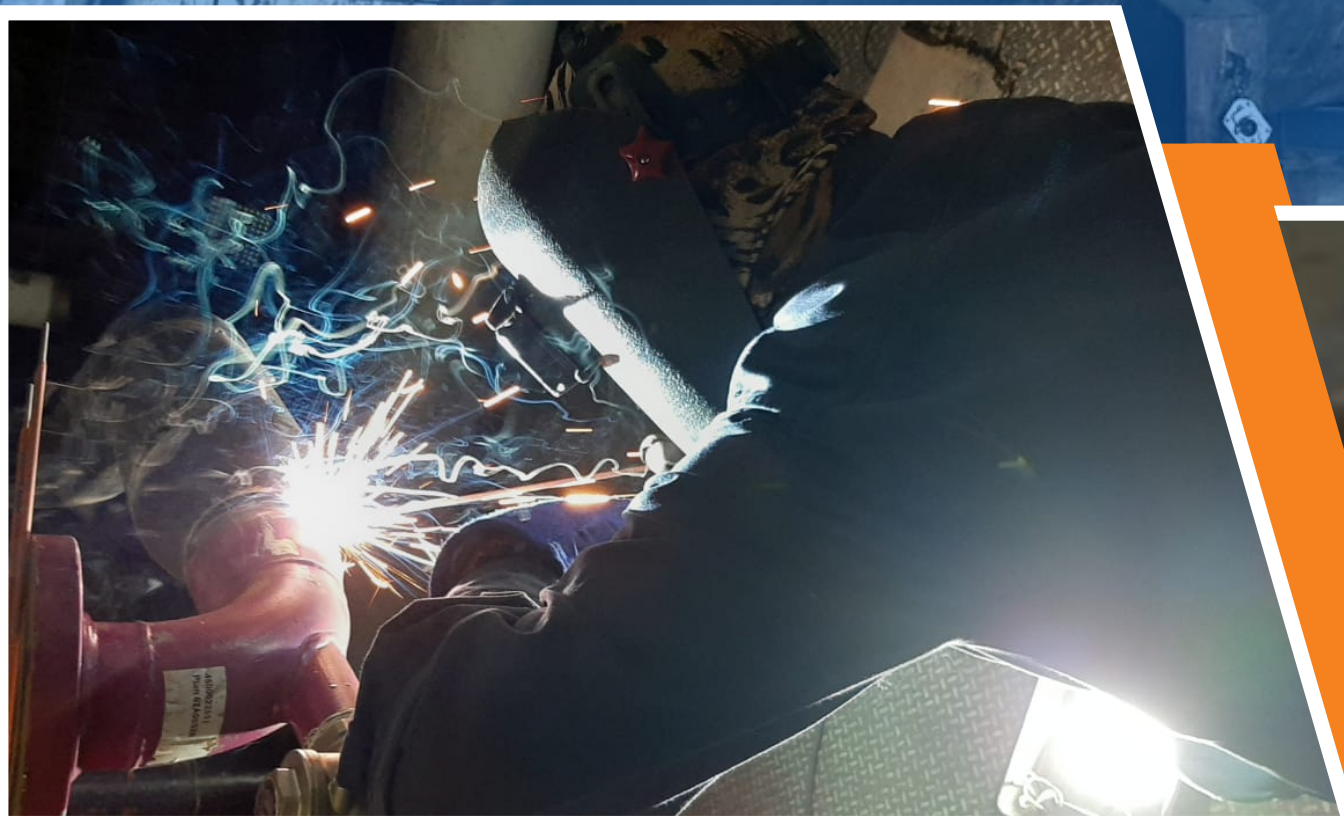
Laser cutting, plate and profile processing ✓

Metal structure fabrication ✓

Industrial installations (mechanical and structural) ✓

Specialized welding (SMAW, FCAW, SAW, GTAW) ✓

Industrial piping (carbon steel, stainless steel) ✓



[www.jroconstrucciones.com.mx](http://www.jroconstrucciones.com.mx)

 /fabricaciones\_jro

 +52 481 126 9790

# TIMELINE

## ABOUT US



**1986**

We were born and began operations in a small workshop, equipped with a welding machine, a toolbox, and a deep desire to grow. That's how we started forging our path in the industrial world, guided by determination and faith.

**1996**

After a decade of continuous effort and sacrifice, new family members and committed personnel joined. We expanded our service catalog to better meet our clients' needs.

**2000**

We invested in infrastructure and formed solid work teams, which allowed us to expand our reach and enter new markets, strengthening our presence in the industry.

**2008**

We redirected our strategic efforts and reinforced our vision. A key phase of asset acquisition began, firmly focused on achieving operational excellence.

**2013**

We transformed into Fabricaciones y Montajes Industriales JRO. New partners joined, and strategic alliances were consolidated, placing the customer at the center of every decision.

**2015**

As an extension of our business vision, JRO Transportes Especializados (JTE) was created to expand our logistical and technical capabilities, addressing the sector's evolving demands.

**2021**

During the global health crisis, we worked tirelessly to ensure our clients' operations continued. We reaffirmed our commitment to quality, safety, environmental responsibility, and occupational health—pillars that continue to define us.

**2022**

Grúas JRO was established to offer specialized lifting and maneuvering solutions. We incorporated a modern fleet of cranes and a highly trained technical team to meet the industry's challenges.

**2025**

We made significant investments to modernize our manufacturing processes, aiming to improve quality, reduce delivery times, and maximize customer satisfaction. Innovation became our path toward a more competitive and sustainable future.

**2026**

We fully trust in God's will as the guide of our path. Continuous improvement is one of our main goals, strengthening our technical, human, and operational capacities. We are committed to remaining industry leaders, responding with excellence and integrity to new market challenges.



# INFRASTRUCTURE

We have a 24,000 m<sup>2</sup> area designated for maneuvering, as well as a 4,500 m<sup>2</sup> industrial building organized into different specialized areas to optimize our operational processes.

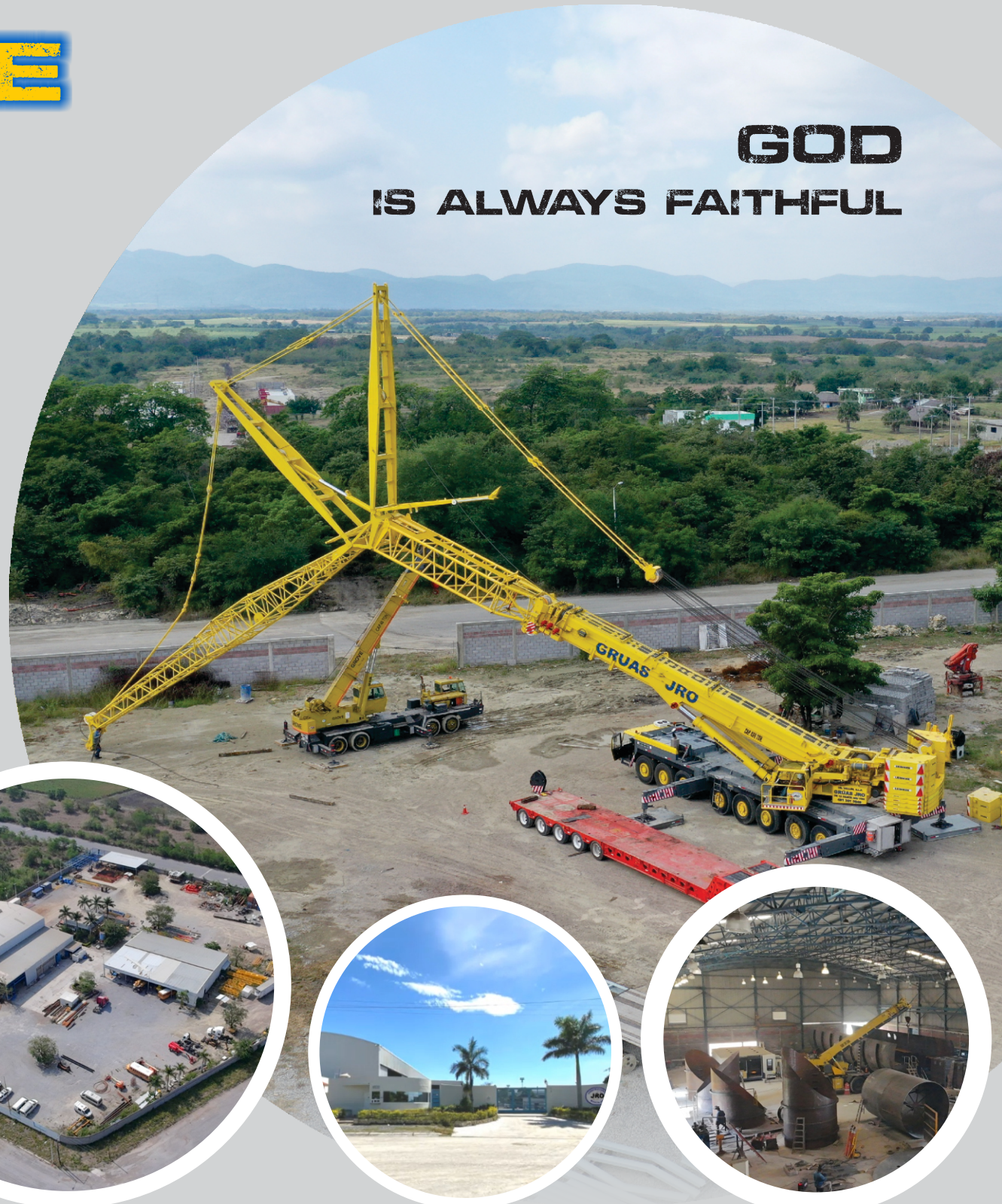
## Staff Structure

LABOR CATEGORY	PERMANENT	TEMPORARY	TOTAL
Engineers	13	5	18
Technicians	4	3	7
Draftsmen	4	2	6
Supervisors	5	5	10
Foremen	5	5	10
Specialized Trades (Assemblers, Welders, Boilermakers, Mechanics, Pipefitters, Scaffolders)	50	50	100
Assistants	50	50	100
Administrative Staff	20	10	30
External Advisors	0	6	6
Equipment Operators (Forklifts, Platforms, Mini Loaders, Telehandlers)	8	5	13
	<b>159</b>	<b>141</b>	<b>300</b>

Areas:  
Head Offices, Production, Sandblasting, Painting, Mechanical Maintenance, and Maneuvering Yard.

**700 tons**  
**Monthly production**

**GOD**  
**IS ALWAYS FAITHFUL**



# QUALITY IN OUR PROCESSES

Materials / Part Preparation / Welding / Painting



We know that in the industrial sector, meeting the highest standards not only ensures the functionality and durability of our products and services, but also strengthens our clients' trust.



At Fabricaciones y Montajes Industriales JRO, quality is not just a goal, but a fundamental principle that guides every stage of our processes.

**Ensuring quality in our production processes is essential to prevent the delivery of a defective final product.**

**Non-destructive testing for weld inspection**

**Tests for coating application**



# OUR COMMITMENT TO YOUR PROJECT: ISO 9001:2015 CERTIFICATION

A standard of excellence applied to all our specialized services



More than a seal on paper, our ISO 9001:2015 certification is the quality contract we sign with you.

At Fabricaciones y Montajes Industriales JRO, quality is not a promise—it is a system. Our ISO 9001:2015 certification supports a rigorous Quality Management System that audits and continuously improves each of our operations.

In the space on the right, instead of generic text, we can highlight the direct benefits of working with a certified company. This gives greater weight to the statement.

## Benefits of Our Quality Management System:

- ✓ **Total Traceability:** Every material and component used in your project is documented and verified, ensuring compliance with the most demanding specifications.
- ✓ **Optimized Processes:** Our work methods are constantly evaluated and improved to maximize efficiency, reduce errors, and meet delivery deadlines.
- ✓ **Highly Skilled Personnel:** We promote continuous training of our team to ensure that welding, assembly, and finishing techniques are carried out with maximum precision.
- ✓ **Customer Focus:** Your satisfaction is the cornerstone of our system. We listen to your needs and integrate them into a process designed to exceed your expectations.



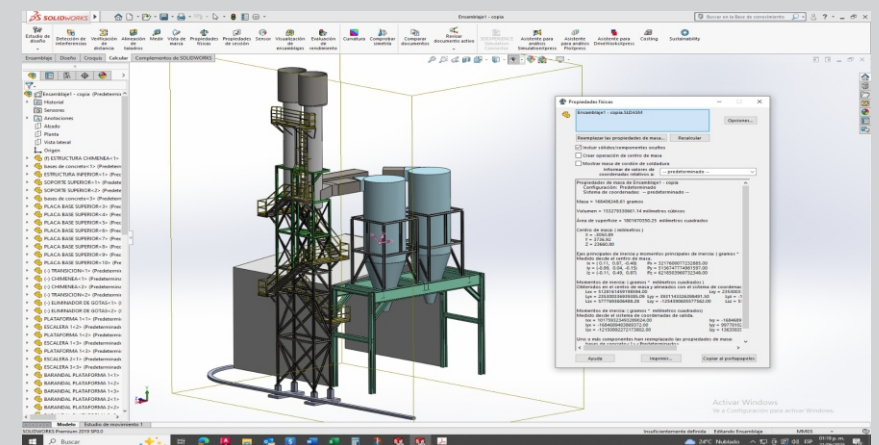
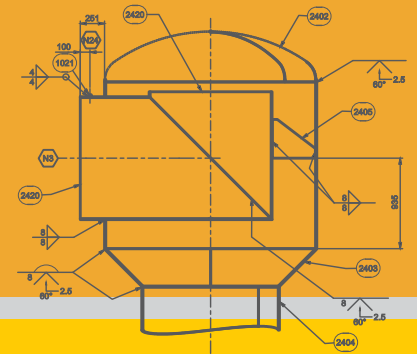
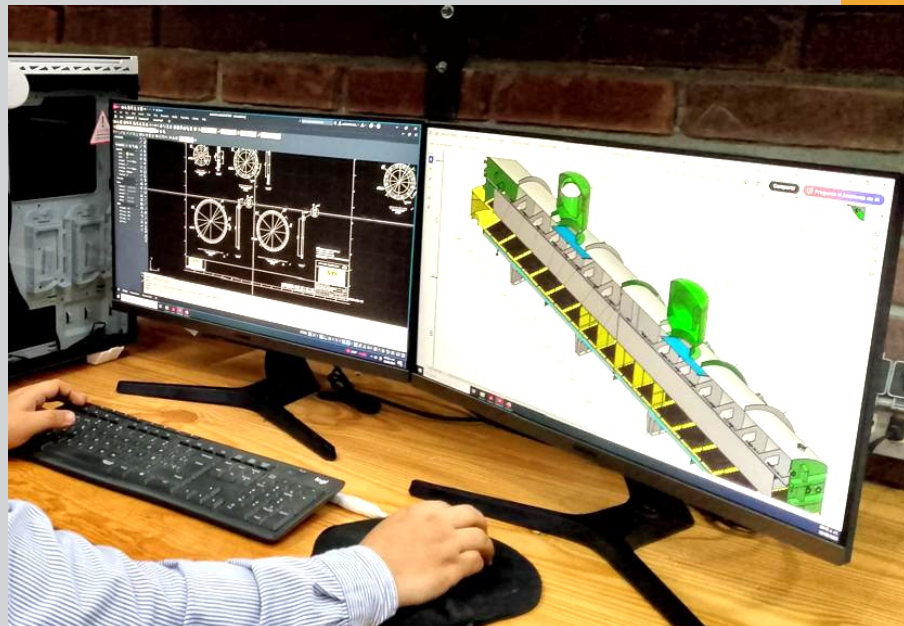
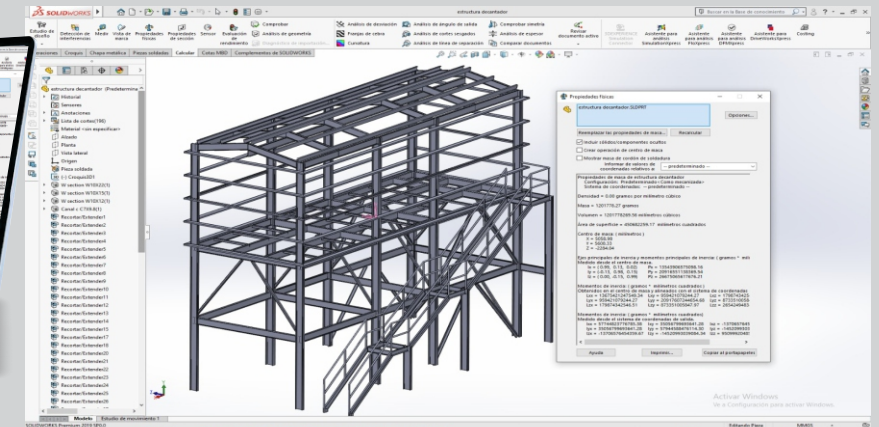
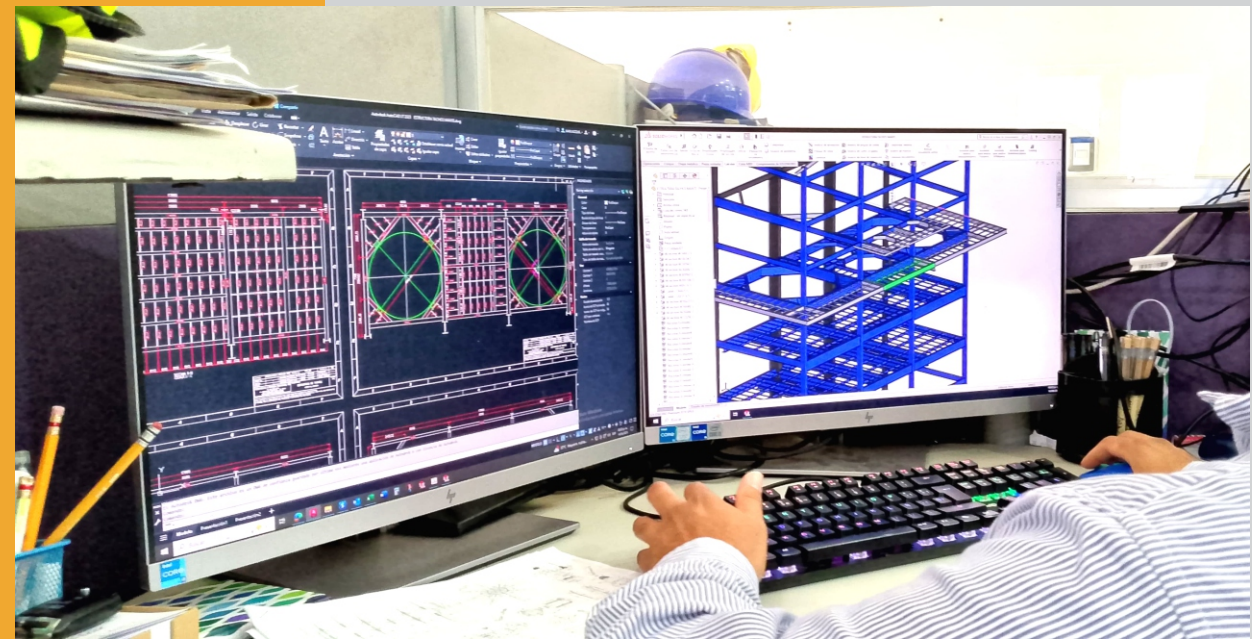
# USE OF SOFTWARE IN MANUFACTURING PROCESSES



The use of software in engineering not only improves productivity and reduces development times, but also minimizes errors, optimizes resources, and ensures higher quality in the final results.

Additionally, it facilitates collaboration among multidisciplinary teams and allows for better traceability of processes.

In highly competitive environments, such as the construction, manufacturing, energy, or infrastructure industries, having up-to-date digital tools is key to innovating, complying with regulations, and adapting to the specific needs of each project.



# LASER CUTTING

At **Fabricaciones y Montajes Industriales JRO**, we incorporate cutting-edge technology into our production processes to ensure precision, efficiency, and quality. Our **laser steel cutting service** allows us to work with plates and profiles of varying thicknesses, adapting to the specific needs of each project

This technology enables us to achieve clean and precise cuts, reduce production times, and minimize waste, resulting in **a significant improvement in manufacturing efficiency**. Additionally, laser cutting optimizes subsequent assembly by ensuring parts with precise tolerances and high-quality finishes.

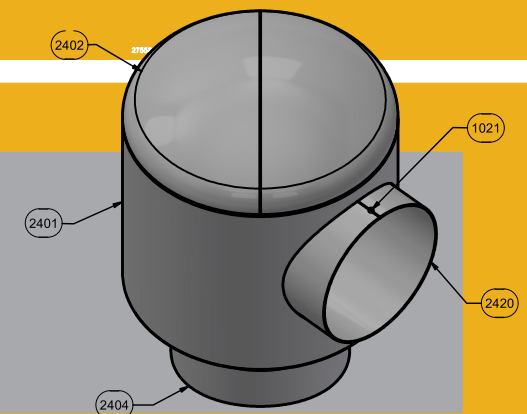
With this technical capability, we reinforce our commitment **to innovation, productivity, and customer satisfaction**, offering tailored industrial solutions that are faster and uphold a high standard of quality.



Precision, speed, and efficiency are key factors that can be improved to achieve high-quality cuts and productivity.



Cutting capacity, thickness:  
•Carbon steel plate: up to 1 1/4 inch  
•Stainless steel plate: up to 3/4 inch  
Maximum dimensions: 8 x 20 feet"



ISOMETRIC VIEW  
MASS: 2700.4 kg



## Project:

# MANUFACTURING AND ASSEMBLY REPLACEMENT OF FURNACE RESIDUAL DUCT

Dismantling of existing ducts and vessels that make up the furnace residual duct at a height of 72 meters

- (2) SQUARE ELBOWS AT THE INLET OF THE PREHEATER
- (2) EXPANSION JOINTS
- (2) SQUARE ELBOWS 60° × 1600 × 1600
- (2) CONCENTRIC TRANSITIONS 1600 DIAM × 1600 × 1600
- (2) EXPANSION JOINTS #2A
- (2) DUCTS #5 A OF 1600 MM DIAMETER
- (2) CIRCULAR ELBOWS 41.8° × 1600 MM DIAMETER (PART #5)
- (1) DUCT #7 OF 2500 MM DIAMETER
- (1) EXPANSION JOINT #2B
- (1) CONICAL TRUNCATED SECTION 2825 MM MAX DIA × 2500 MM
- (3) EXPANSION JOINTS #2C
- (1) CIRCULAR ELBOW 13.51° × 2825 MM DIAMETER
- (1) DUCT #4 B OF 2825 MM DIAMETER
- (1) CONCENTRIC TRANSITION 2825 MM DIAMETER
- ALUMINUM PAINT FOR HIGH TEMPERATURE

### Volume:

Manufacturing: 27,080.67 kg  
Sandblasting and Painting: 414,315.58 m<sup>2</sup>

### Equipment:

Crane LTM 1400  
Crane KMK 5110  
Telescopic Boom Lifts  
Elevation Platform  
Multidirectional Scaffold









# Project

## METAL MECHANICAL EQUIPMENT INSTALLATION

### CEMENT MILL REPLACEMENT MILL HEAD REPLACEMENT

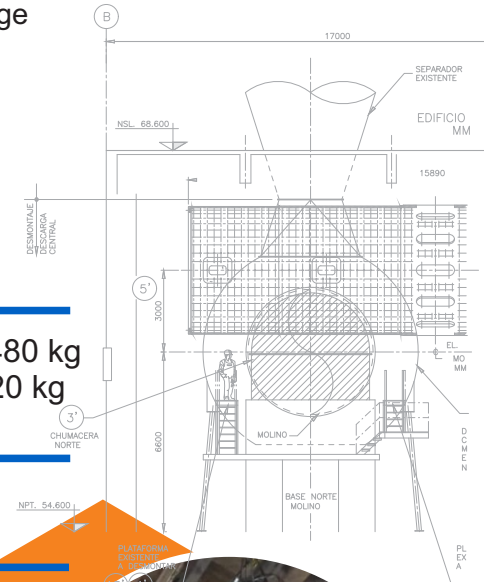
- Support structures, handrails, stairways, walkways
- Bucket elevator
- Ducts, chutes, and hoppers
- Liners
- Lubrication lines
- Equipment guards
- Mill shell
- Mill head
- Fabrication of mill head transport carriage
- Fabrication of mill head support
- Shell plating – chambers 1 and 2
- Inlet and outlet diaphragms

#### Volume:

- Mill head and peripherals 198,480 kg
- Shell plating, diaphragms 156,720 kg
- Complete shell ring 120,000 kg

#### Equipment:

- Manitex Titan crane 28 ton
- RT 765E-2 crane
- KMK 5110 crane
- Telescopic forklift
- Lifting platforms
- Multidirectional scaffolding



**Client: Cemex México**  
**Project Location: Cemex Plant, Tamuin, San Luis Potosí, México**



## Project:

# METAL MECHANICAL EQUIPMENT INSTALLATION

## KILN SECTION REPLACEMENT

### TIRE - SHELL - GEAR RING

Disassembly and assembly:  
 Panels, guards, and peripheral equipment or installations  
 Rigging, anchors, bridges, and supports  
 Internal crosses and 6" lifter ribs  
 Assembly of supports and stools  
 Tire  
 Gear ring protection guard  
 Gear ring Pinion

#### Volume:

---

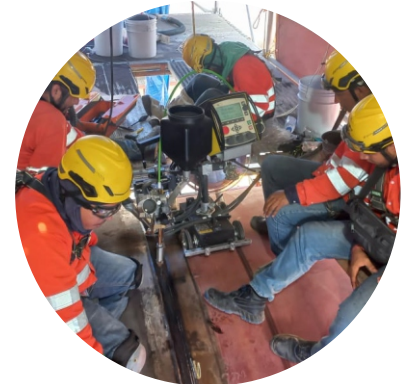
Tire 92,600 kg  
 Shell 54,300 kg  
 Gear ring 50,500 kg

---

#### Equipment:

---

Manitex Titan crane – 28 ton  
 LTM 1400 6.1 crane  
 Telescopic forklift  
 Lifting platforms  
 Multidirectional scaffolding



**FABRICACIONES Y MONTAJES INDUSTRIALES JRO is a company offering a wide range of solutions in manufacturing, industrial assemblies, maintenance, crane rental, and specialized transport.**



## Our Clients



General Director:  
[omar.resendiz@jroconstrucciones.com.mx](mailto:omar.resendiz@jroconstrucciones.com.mx)

Operative Director:  
[carlos.resendiz@jroconstrucciones.com.mx](mailto:carlos.resendiz@jroconstrucciones.com.mx)

Sales:  
[juan.contreras@jroconstrucciones.com.mx](mailto:juan.contreras@jroconstrucciones.com.mx)  
[Cel. 481 126 9790](tel:4811269790)

Telephone Line:  
+52 481 381 0949  
+52 481 383 1140

[www.jroconstrucciones.com.mx](http://www.jroconstrucciones.com.mx)

Contacts

[proyectos@jroconstrucciones.com.mx](mailto:proyectos@jroconstrucciones.com.mx)  
[quejas.sugerencias@jroconstrucciones.com.mx](mailto:quejas.sugerencias@jroconstrucciones.com.mx)  
[contacto@jroconstrucciones.com.mx](mailto:contacto@jroconstrucciones.com.mx)

Address: Avenida Los Tenek #355 Tampaya, 79253, Ciudad Valles, S.L.P, México